



Climate_CRICES

Climate_CRICES

Increasing Climate Change Resilience in Europe
Making better use of data to counter climate change

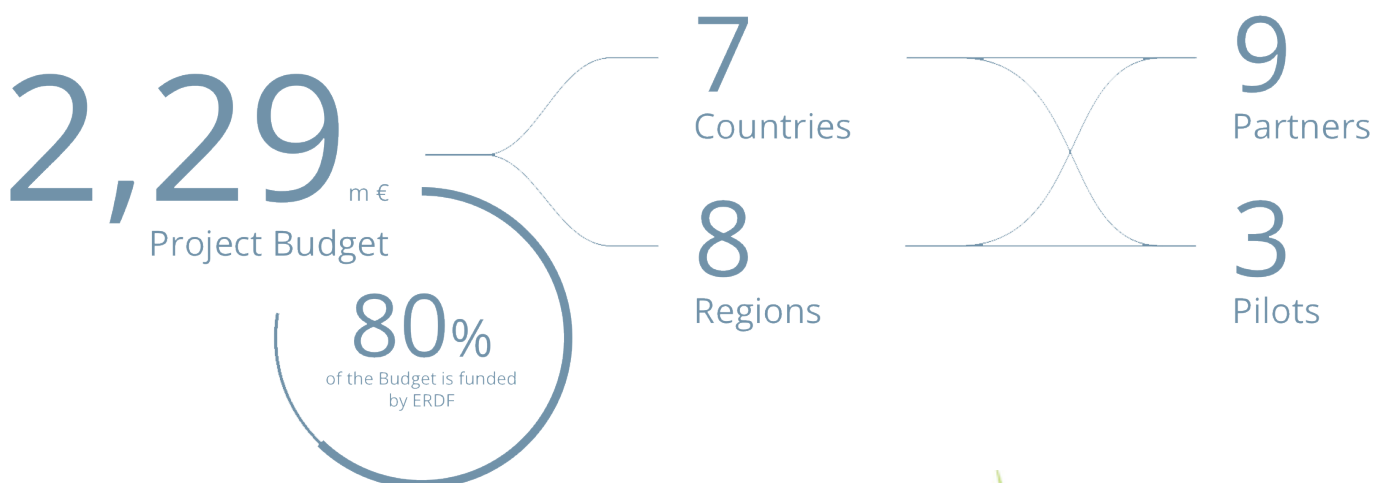
NEWSLETTER | Spring 2025

A BUSY PERIOD FOR CLIMATE_CRICES

It's been an exciting and productive period for the Climate_CRICES project! From a successful consortium meeting in Dresden to organizing a series of stakeholder workshops, our team has been working at full speed. We're proud to share that the Climate_CRICES strategy is taking shape, and the first version of

our data dashboard is already in development. In this issue, we'll take you through our latest progress and show how we're working to make climate data more accessible and actionable for the people who need it most—regional and municipal decision-makers.

PROJECT OVERVIEW



SPOTLIGHT ON THE SECOND PARTNERS MEETING IN DRESDEN



From January 29 to 31, 2025, Climate_CRICES partners gathered in Dresden for their second consortium meeting. This three-day event served as a dynamic platform for knowledge exchange, strategic alignment, and forward-thinking collaboration around climate resilience.

KEY HIGHLIGHTS FROM THE MEETING INCLUDED:

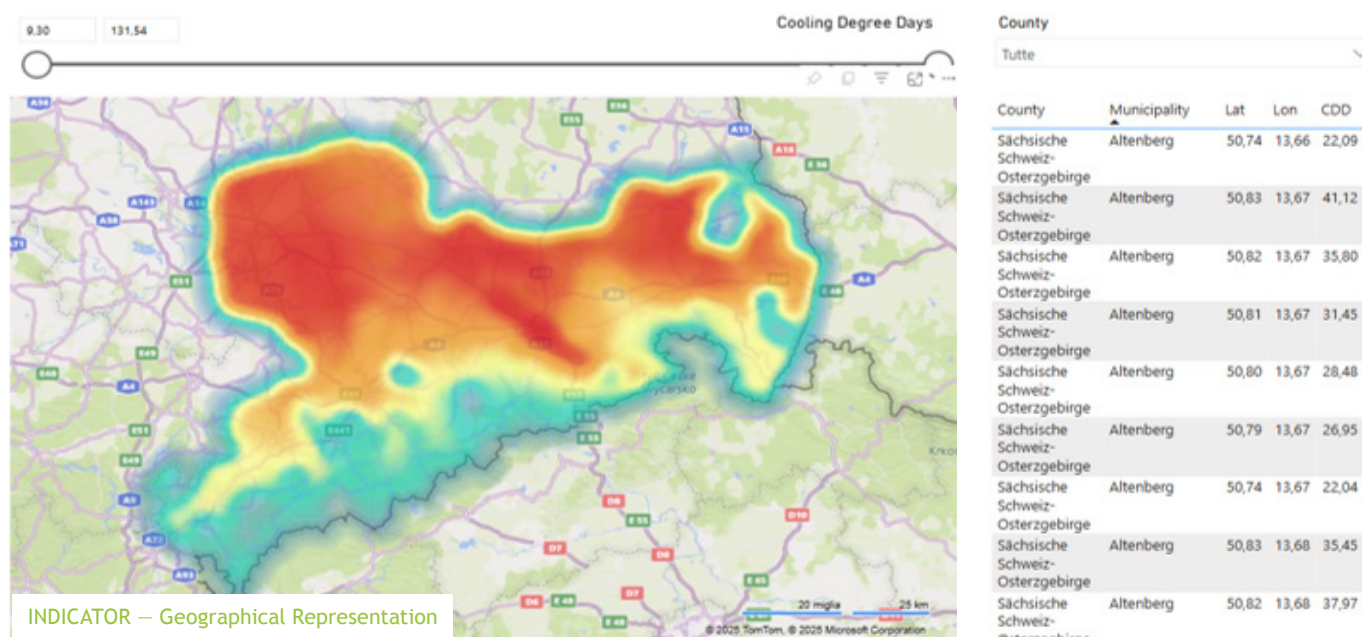
- Refining indicators and policies to strengthen the project's strategic framework for climate adaptation.
- Engaging stakeholders through hands-on workshops, promoting collaboration and co-designed solutions.
- Advancing pilot actions and dashboard development to monitor climate resilience progress across regions.
- Improving communication strategies to better reach and inform our diverse stakeholder groups.

The meeting marked a crucial step forward in aligning efforts and setting the stage for the impactful months ahead.

BRIDGING SCIENCE AND POLICY: EVALUATING CLIMATE IMPACT INDICATORS

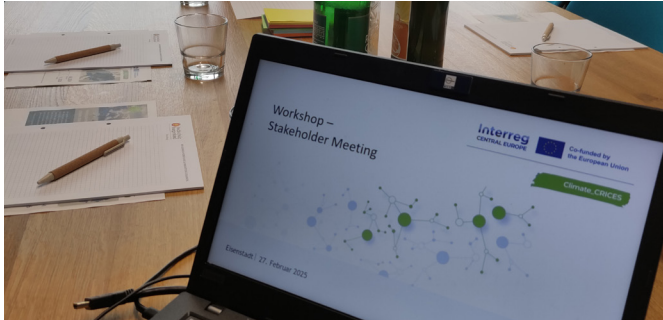
To lay the groundwork for effective climate adaptation, Climate_CRICES began by compiling a comprehensive list of climate impacts and indicators related to heat, drought, flooding, and biodiversity—based on leading scientific sources like the IPCC and European Environment Agency. After gathering feedback from

project partners, the indicators were reviewed against regional adaptation strategies from pilot areas. The findings highlight a critical need for better integration between scientific frameworks and regional policy implementation.



GROUNDING THE INDICATORS IN REGIONAL REALITIES: INSIGHTS FROM STAKEHOLDER ENGAGEMENT

This spring, Climate_CRICES took an important step in connecting science with local needs through a series of regional stakeholder workshops. Held across eight participating regions, these sessions brought together over 100 participants, a diverse mix of local authorities, policymakers, research institutions, and NGOs—ensuring a wide range of perspectives were heard.



WHAT WE DID:

- Validated the internally selected climate impact indicators
- Identified region-specific needs and data gaps
- Gathered input on dashboard expectations and usability

WHY IT MATTERS:

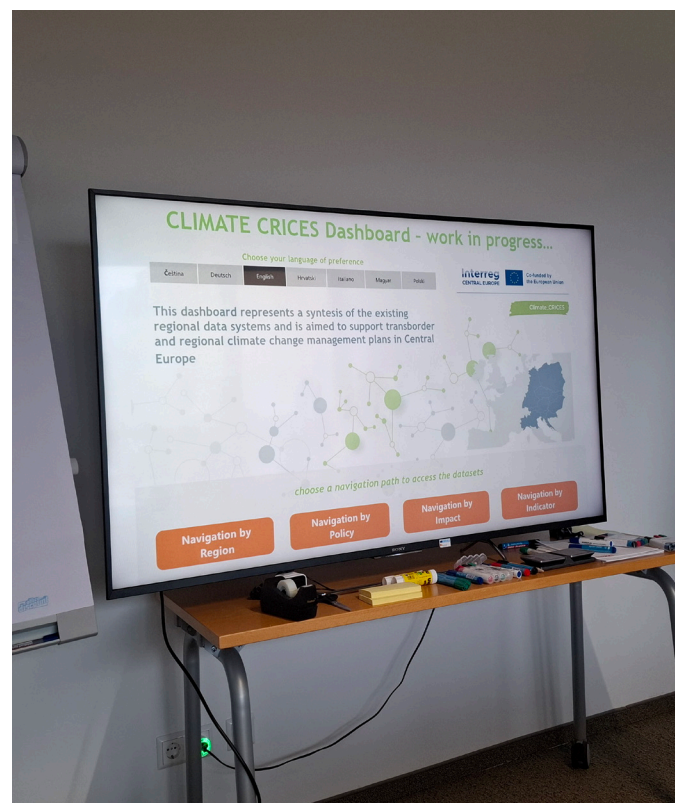
These discussions were essential for making sure the Climate_CRICES dashboard reflects not only scientific priorities but also the real-world needs of those on the front lines of climate adaptation.

All feedback was documented in stakeholder reports and has been instrumental in refining the final set of indicators—laying the groundwork for a more inclusive and practical climate resilience tool.

KEY LESSONS LEARNED: STRENGTHENING DATA USE AND CAPACITY FOR CLIMATE ACTION

The Climate_CRICES project has uncovered several vital insights into improving the use of climate data at the regional and municipal levels:

- **Human Capacity is Crucial:** Effective data use relies not only on access but also on trained personnel. Many municipalities, especially smaller ones, face challenges due to a lack of resources to analyze and act on climate data.
- **Visualization Enhances Usability:** Dashboards and portals with visual, user-friendly interfaces were highly valued. Simple designs help make data more accessible, even for non-experts.
- **Institutional Fragmentation Hinders Integration:** Disjointed datasets, inconsistent update cycles, and lack of interdepartmental coordination are significant barriers. Harmonizing data and ensuring regular updates are essential for seamless integration.
- **Funding and Sustainability Must Be Planned Early:** Long-term success requires financial planning beyond initial project funding. Without a clear strategy for sustainability, data platforms risk becoming underfunded or obsolete.
- **Legal and Policy Alignment Drives Adoption:** Regions with binding climate adaptation policies, show greater institutional buy-in and integration of data-driven planning.



- **Training Boosts Data Literacy:** Stakeholders across regions emphasized the need for workshops and training sessions to build capacity in interpreting and applying climate data in practical ways.

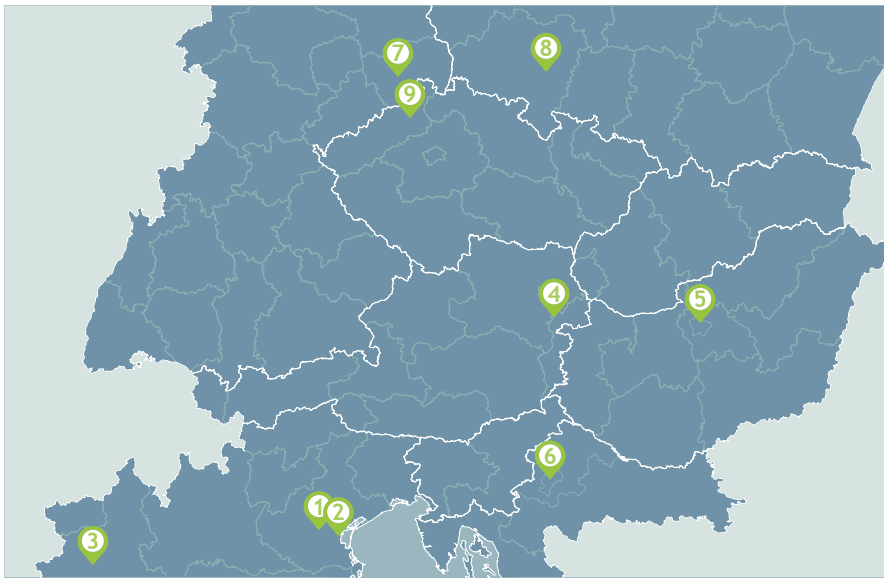
CLIMATE_CRICES: A BLUEPRINT FOR ADAPTATION

The Climate_CRICES methodology demonstrates that successful climate adaptation is not only about having access to climate data but also about building the systems, skills, and institutional culture necessary to effectively use that data. By engaging local stakeholders, conducting region-specific SWOT analyses, and fostering transnational cooperation, the project offers a robust, transferable model for other regions facing similar challenges.

WHAT'S NEXT

On July 9-10, project partners will convene in Croatia's capital to advance the use of climate data and strengthen climate resilience efforts across Central Europe. The meeting will focus on turning insights into action.

THE PARTNERSHIP



LEAD PARTNER
Veneto Region
1. – Italy



2. – Italy



3. – Italy



4. – Austria



5. – Hungary



6. – Croatia



7. – Germany



8. – Poland



9. – Czechia

LIKE AND FOLLOW US

Learn more about our initiatives and stay updated by visiting the [Climate_CRICES](https://www.interreg-central.eu/projects/climate_crices/) webpage and following us on social media.

https://www.interreg-central.eu/projects/climate_crices/

<https://www.linkedin.com/company/climate-crices/>

