

MESTRI-CE Project's overview



**Project
overview**



Key



Duration



**Project
Summary**



Partners



Contact

PROJECT OVERVIEW

Project ID

CE0100051

Name of the lead partner organisation

(in English language)

North-West Croatia Regional Energy and Climate Agency

Project duration in months

36

Project acronym

MESTRI-CE

Name of the lead partner organisation

Regionalna energetska-klimatska agencija Sjeverozapadne Hrvatske

Project title

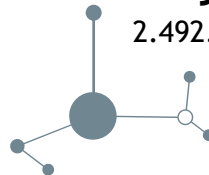
Smart Management and Green Financing for Sustainable and Climate Neutral Buildings in Central Europe

Programme priority specific objective

SO2.1: Supporting the energy transition to a climate-neutral central Europe

Project budget

2.492.700,00 €

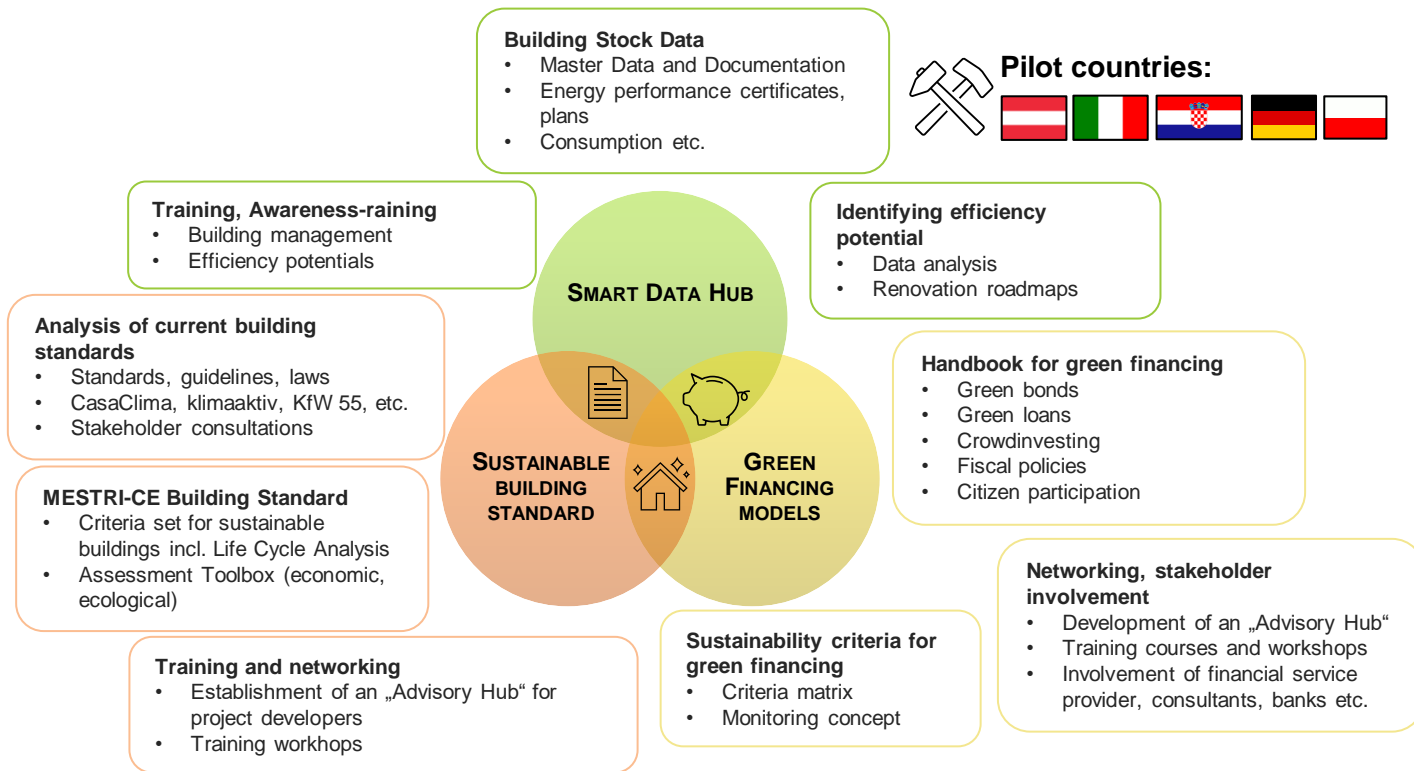


Key

A climate-neutral central Europe requires a drastically reduced energy consumption of buildings. However, renovation is often costly and complex. The MESTRI-CE project introduces a new investment model to finance more climate-friendly buildings that guarantee sustainability. The model covers both the supply and demand side of the renovation market and builds on data collected and tools and green standards developed by the project.



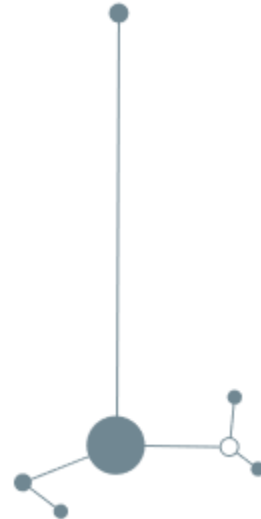
PROJECT SUMMARY



DURATION

Start

04.2023



End

03.2026

Partners



PARTNER

**e7 energy innovation &
engineering**

e7 - Austria

• **North-West Croatia
Regional Energy and
Climate Agency**

REGEA - Croatia

• **Energy Agency of
Northern Bavaria**

EAN - Germany

Mazovia Energy Agency

MAE - Poland

**IPOPEMA Financial
Advisory**

IPOPEMA - Poland

**Energy Agency South
Tyrol / Casaclima**

Casaclima - Italy

Jožef Stefan Institute

JSI - Slovenia

Green Energy
Cooperative

ZEZ - Croatia

Zagreb Stock Exchange
Inc.

ZSE - Croatia

Energy Agency of Styria

EASt - Austria



Smart Management and Green Financing for Sustainable and Climate Neutral Buildings in Central Europe

MESTRI-CE



MESTRI-CE



Central Europe



<https://www.interreg-central.eu/projects/mestri-ce/>



<https://www.linkedin.com/company/mestri-ce>

