

INSIDE THIS ISSUE

Page 2
What is DRT: Interview with Redmint

Page 3
Project Overview by SRM

Page 4
Map of Pilot Projects

Page 5
Training Workshop: Report by Rupprecht Consult

Page 5
Outlook of the Project

Page 6
Project Partners



KICK-OFF OF THE DREAM_PACE PROJECT

We are excited to present the first edition of our biannual newsletter, designed to keep our Project Partners (PPs) and stakeholders updated on the progress and developments within the DREAM_PACE project. As we continue on this journey, we aim to build an integrated DRT 3.0 strategy for Central Europe regions.

In March 2023, we had the pleasure of hosting the official kick-off event and our first Transnational Partner Meeting (TPM) in Bologna, Italy. The meeting proved to be a valuable opportunity for our PPs to come together, fostering new connections, and gaining insights into the engaged territories and the project's overarching objectives.

Currently, our dedicated PPs are diligently working on assessing the status-quo of their respective pilot regions. This comprehensive analysis will help us better understand the existing situation and identify the challenges that lie ahead.

As we eagerly anticipate the next milestone, we look forward to convening once again at the second TPM in Split, Croatia, at the end of September. This meeting aims to be a platform for a fruitful exchange of ideas and experiences among PPs.

We extend our gratitude to all our PPs for their dedication and support throughout this project. Together, we are shaping a brighter future for sustainable transportation in central Europe.

Stay tuned for more updates and inspiring insights in the upcoming newsletters.



Courtesy of András EKÉS ©

WHAT IS DEMAND RESPONSIVE TRANSPORT

INTERVIEW WITH REDMINT

WHICH ARE THE PROBLEMS OF TODAY'S PUBLIC TRANSPORTATION IN CENTRAL EUROPE'S RURAL AND PERIPHERAL AREAS?

Especially in rural and peripheral regions, public transport represents a crucial element to support livability and competitiveness, guaranteeing attractive and sustainable mobility options for younger people and inclusiveness for the elderly and other vulnerable groups. Clearly, providing traditional public transport where the demand is sparser and quantitatively lower has higher costs, and might not be able to deliver qualitatively adequate services according to people's needs.

WHAT IS DEMAND RESPONSIVE TRANSPORT (DRT)?

Demand Responsive Transport is a form of mobility service with a driver where schedule, stops and routes can be flexible, in order to better suit the needs of users. Ideally, it can be considered as a service in between traditional public transport and taxis, combining higher degrees of flexibility on one side and pooling on the other. It can use vehicles of different sizes (buses, minivans, cars) and be technology-driven, using ICT to interact with users and better plan the operations.

WHY IS DRT HELPFUL?

DRT can complement public transport networks by adding flexibility to existing services, enhancing accessibility for all citizens by reaching underserved areas, and better fulfilling the needs of specific user groups including elderly and more vulnerable people. Moreover, the integration of DRT can improve the efficiency and effectiveness of sustainable mobility systems through a better use of resources.

WHICH ARE THE MAIN CHALLENGES FOR IMPLEMENTING DRT?

The development process of DRT services requires mainly three ingredients: governance structures and planning approaches ready to support integration in the transport networks; service providers aware of their potential of technological and operational innovations in enhancing the efficiency and effectiveness of their networks; public acceptance towards sustainable mobility innovations.

HOW WILL THE DREAM_PACE PROJECT PROMOTE SUSTAINABLE MOBILITY IN CENTRAL EUROPE?

DREAM_PACE will develop innovative DRT concepts for peripheral and rural areas in Central Europe, complementing regional mobility networks to improve connectivity, sustainability, and inclusiveness. The project will improve DRT planning and delivery capacities of public authorities and operators, and PPs will co-design, test and implement innovative DRT solutions enhancing their mobility networks. Together with innovative solutions, a common strategy will be jointly elaborated to be transferred across CE regions, to accompany the delivery of a new generation of DRT services as functional and integral part of their transport networks.

PROJECT OVERVIEW

PORTRAIT BY SRM

THE DREAM_PACE PROJECT

DREAM_PACE - Demand REsponsive trAnsport integrating regional Mobility networks for PAssengers in Central Europe - is funded by the Interreg Central Europe Programme, under the priority "Cooperating for a better-connected central Europe".

Central Europe territory is characterized by uneven transport connections and mobility opportunities, across and within regions, between urbanized contexts and rural and peripheral areas. In such a context, the project covers the programme priority specific objective SO3.1 "Improving transport connections of rural and peripheral regions in Central Europe".

IMPROVING ACCESSABILITY AND CONNECTIVITY IN CENTRAL EUROPE

During its 36-month duration, DREAM_PACE will improve accessibility and connectivity in the Central Europe peripheral and rural areas, by integrating the Public Transport (PT) offer with Demand Responsive Transport (DRT) services. This will be obtained by the development of innovative DRT concepts complementing regional mobility networks and the improvement of DRT planning and delivery capacities of public authorities and operators: in Bologna, Pavia, Budapest areas, strategies and solutions to foster a better integration of DRT and public transport will be drafted; in Osttirol and Baden-Wuerttemberg, DREAM_PACE will increase the coordination among existing DRT initiatives; while in the Split-Dalmatia County a new integrated approaches for DRT "greenfields" will be experimented.

CO-DESIGN, TEST & IMPLEMENT INNOVATIVE DRT SOLUTIONS

The PPs will also jointly develop a strategy for DRT in Sustainable Urban Mobility Plans (SUMP) to be adopted at EU level, and co-design, test and implement innovative DRT solutions enhancing mobility networks.

Integration is the key of the DREAM_PACE innovative approach, as DRT services are mostly developed as stand-alone solutions to specific needs: this means that the potential of scalable strategies and solutions is widely underestimated. DREAM_PACE will exploit the potential of integrated planning and digital and operational innovations for a common strategy and develop innovative DRT modular solutions.

Courtesy of András EKÉS ©



TRANSNATIONAL COOPERATION AND LOCAL ACTIONS

The implementation of the DREAM_PACE actions build on both transnational cooperation - which can guarantee an adequate responsiveness and adaptability of project results to specific characteristics of mobility ecosystems across CE rural and peripheral areas - and local actions - which will engage users and PT suppliers.

NEW GENERATION OF DRT SERVICES

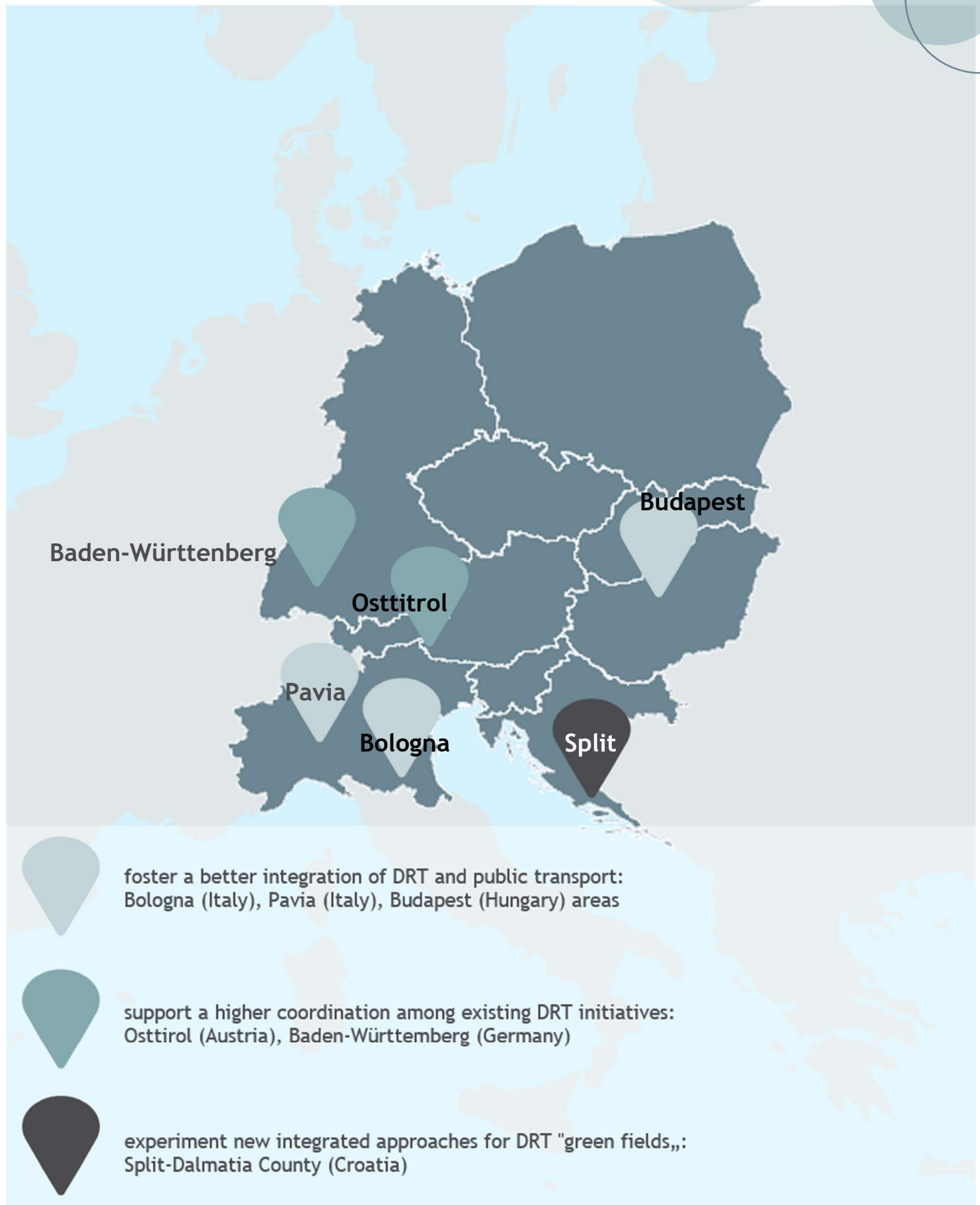
As a result, relying on the joint development and implementation of governance, planning, digital and operational innovations, DREAM_PACE will make available a new generation of DRT services, as an integral part of the regional mobility networks, enhancing accessibility for citizens, territorial cohesion and social inclusion.

Duration: 03.2023 - 02.2026

Project Budget: 2,82m€ **5 Countries, 12 Partners, 4 Pilots**



MAP OF PILOT PROJECTS



PLANNING AND DESIGN OF DRT INTEGRATED SOLUTIONS.

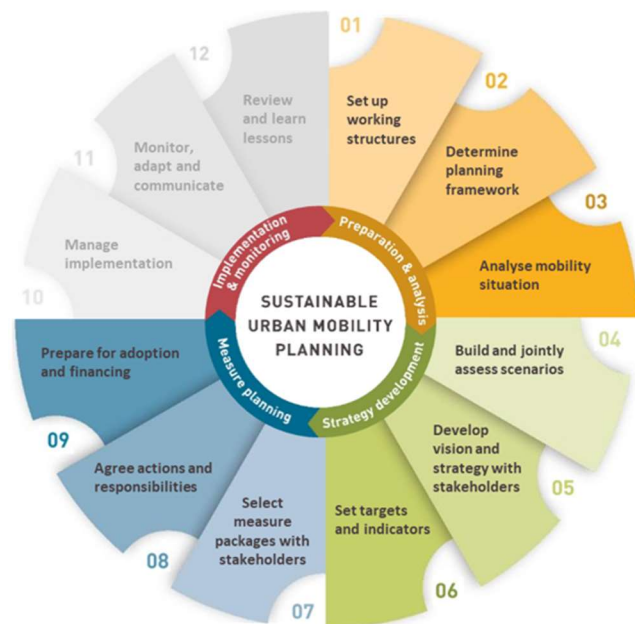
WORKSHOP ON METHODOLOGY

REPORT BY RUPPRECHT CONSULT

On 13 July 2023, DREAM-PACE held a training workshop on the project's methodology for the planning and design of DRT solutions.

The online workshop was moderated by the Project Partner Rupprecht Consult, who is leading efforts towards developing this methodology, and included the participation and active contribution of all PPs.

The event aimed to present the concept and structure of the DRT planning and design process, addressing its alignment with other project activities and their time plan, and to discuss and validate the proposed methodology, identifying specific context conditions and potential gaps in the implementation, as well as to address doubts and questions from the PPs.



Living Labs preparation

Stakeholder mapping and engagement. Who are you collaborating & liaising with? What are their roles, interests, concerns? How to engage and ensure build cooperation structures?

State-of-the-Art

Which policies, plans and regulations set the conditions/baseline for the process? What are the main mobility problems & opportunities? What resources and system conditions need to be considered=?

Scenario development

What goals should a DRT service fulfil? Which alternatives should be considered for the service? Definition of scenarios and co-creation of common vision

Co-design of solutions

What should the service look like? How can success be determined? Define DRT service areas and operating parameters, and agree on implementation planning, responsibilities and tasks.

OUTLOOK OF THE PROJECT

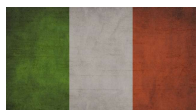
Following the successful completion of the methodology workshop on stakeholder mapping conducted by Rupprecht Consult, the project has entered an exciting phase of stakeholder engagement. At present, the PPs are mapping out the stakeholders and preparing for the upcoming diagnosis workshops scheduled for September and October.

To foster collaboration and enhance the project's effectiveness, a pivotal meeting has been planned on 28 and 29 September hosted by our Project Partners SDC and Dyvolve in the city of Split, Croatia. During this two-day event, the PPs will convene to discuss and analyze the initial results achieved so far. The meeting will serve as a platform to exchange valuable insights and experiences.

We are thrilled about the progress made thus far and remain enthusiastic about the positive impact our project will have on DRT development, stakeholders and the broader community. We look forward to leveraging the outcomes from the diagnosis workshops.

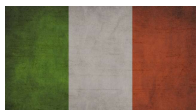


LEAD PARTNER



SRM Networks and Mobility

PROJECT PARTNERS



Italy



Redmint Social Enterprise



AUTOGUIDOVIE SPA



Hungary



Mobilissimus Ltd.



BKK Centre for Budapest Transport



Croatia



DYOLVE d.o.o.



Split-Dalmatia County



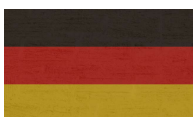
Austria



AustriaTech - Federal Agency for Technological Measures Ltd.



Regional Management East Tyrol



Germany



nexus Institute for Cooperation Management and Interdisciplinary Research



Technische Universität Berlin



Rupprecht Consult

CONTACT

Lead Partner:

Giuseppe Liguori
SRM Networks and Mobility
via A. Calzoni, 1/3, I-40128 Bologna
e-mail: giuseppe.liguori@srm-bologna.it

Communication Manager:

Nora Bonatz & Massimo Moraglio
Technische Universität Berlin
Marchstraße 23, 10587 Berlin
e-mail: nora.bonatz@tu-berlin.de &
moraglio@tu-berlin.de