

Interreg



CENTRAL EUROPE

European Union
European Regional
Development Fund

LUMAT

TAKING
COOPERATION
FORWARD



Final Meeting - 2019-04-15



Pilot Projects Voitsberg



EC Energy Centre Lipizzanerheimat

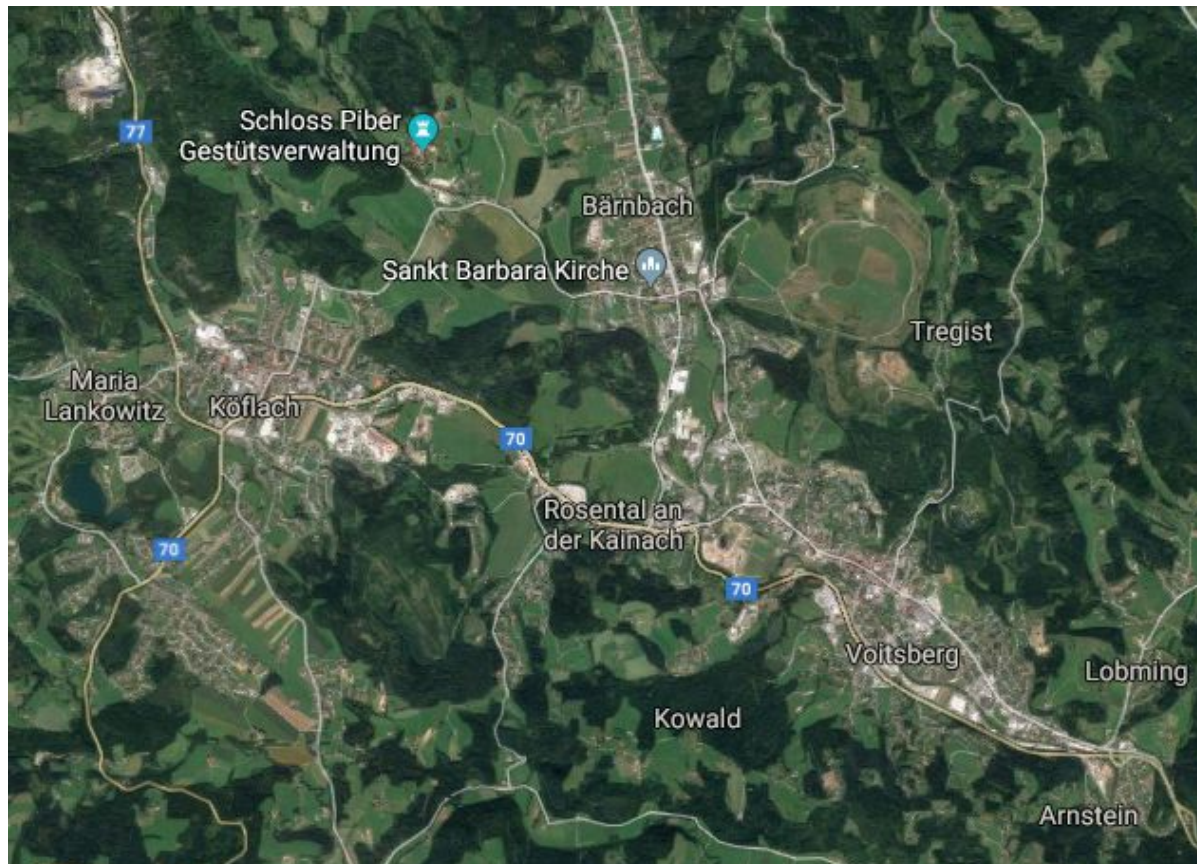
Requirements according to application:

- Building a sustainable (first) cross-community garden “show” “Lipizzanerheimat” as a recreational and producing space for the peri urban metropolitan area of Graz (final goal: permanent character)
- Several communities of the region should be involved by renaturation of “brownfields” / former mining areas (soil improvement)



SITES OF ACTIONS

Pilot region: Kernraumallianz Lipizzanerheimat



OVERVIEW BROWNFIELDS

Brownfield areas Kernraumallianz (CircUse)



Pilot project: Preparation of a village renewal project, 2-step approach: planning, implementation - project was stopped last summer



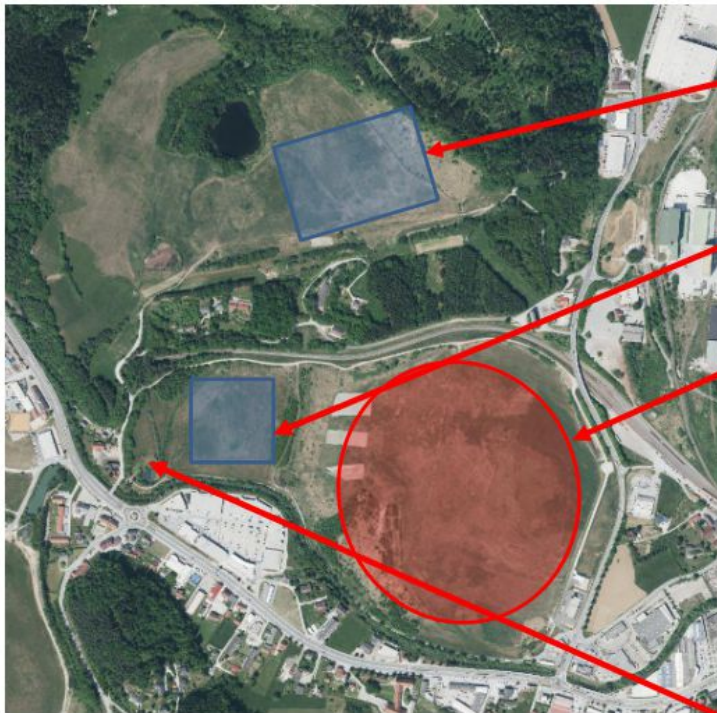
- Bärnbach: potential analysis - Energy optimization of an office property with 1600 m² floor space with a special greening

Brief description:

- In the course of optimizing the energy use of an office property with 1600 m² floor space, the south-facing façade will be enriched with a special greening in terms of energy efficiency.
- The greening should on the one hand have an optical effect and on the other hand bring considerable savings in the cooling of the object.
- As enrichment and attraction in addition to the vertical greening new developments such horizontally growing plants are used.



Start of implementation of the feasibility study of mine water use for heating greenhouses - Use for winter vegetables



Brachfläche (ehem. Bergbaugelände), Bau eines Gewächshauses eingeschränkt möglich (Fläche 280 x 170 m ca. 47.600 m²); Eigentümer: GKB Bergbau

Brachfläche (ehem. Bergbaugelände), Bau eines Gewächshauses eingeschränkt möglich (Fläche 160 x 170 m ca. 27.200 m²); Eigentümer: GKB Bergbau

Brachfläche (ehem. Bergbaugelände), hier kann keine Bebauung der Fläche stattfinden.

Luftbild GIS Steiermark ehemaliges Bergbaugelände

Pumpenhaus zur Grubenwasserentnahme



- Feasibility study regarding the introduction of land as "equity" to business settlements
- A financial model is to be developed for the potential industrial areas in the core area, where young companies are offered the opportunity to obtain space in a cost-effective manner without making large capital investments.
- This involves the development of a venture capital-like fund that should be set up by the communities and possibly also by the property owners.
- This fund acquires the land and makes it available to the founders.
- The payment is made first free of installments later with a share of the profit, so that with good course a disproportionate return flow takes place.

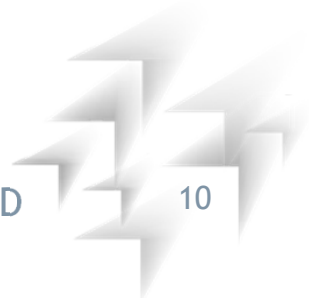


- Starting implementation of a concept of a garden project on a club basis - urban community garden



ACTION PLAN - ACCOMPANYING PROJECTS

“Garden route”: Creation of a connection between all the garden and park elements via the cycle path network that is currently being planned with regard to a recreational area for the region and Graz



Thank you for your attention!

